

CJBDT

400° C/2h double inlet extractor fan units in Magnelis sheet steel with maximum corrosion resistance according to ISO 12944



400 °C/2h extractor fan units and double inlet centrifugal extractor fans with direct drive motors for immersed operation in fire risk zones. With the option of a single-phase motor.

Fan:

- Structure in category C5 anti-corrosive Magnelis sheet steel.
- Forward curved impeller in galvanised sheet steel.
- External terminal box.
- Vibration isolators.
- Approved in accordance with standard EN 12101-3, with certificate no.: 0370-CPR-0580.

- Single-phase 230 V 50 Hz and three-phase 230/400 V 50 Hz (up to 3 kW) and 400/690 V 50 Hz (powers greater than 3 kW).
- Maximum temperature of air to be carried: S1 continuous operation -25 °C +60 °C, S2 operation 300 °C/2h, 400 °C/2h.

Finish:

- Magnelis steel sheet.

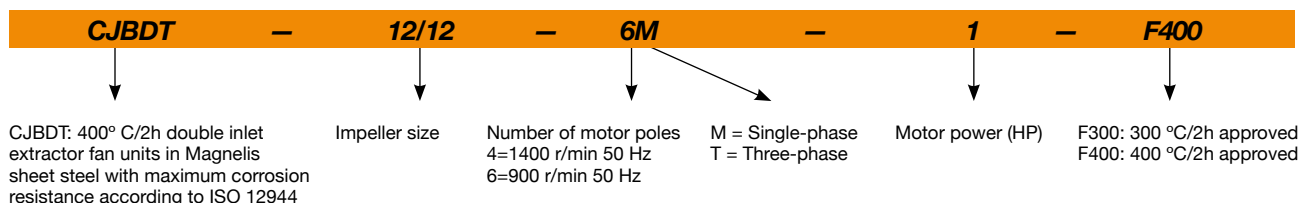
On request:

- Fans with circular outlet.
- Fans with vertical outlet.

Motor:

- Class H motors for S1 continuous operation and S2 emergency use. With ball bearings, IP55 protection and 1 or 2 speeds, depending on model.

Order code



Technical characteristics

Model	Speed (r/min)	Maximum admissible current (A)			Installed power (kW)	Maximum flow rate (m³/h)	Sound pressure level ¹ dB(A) Inlet	Approx. weight (Kg)
		230V	400V	690V				
CJBDT-9/9-4T	1420	2,90	1,70		0,55	3000	57	44
CJBDT-9/9-4M	1410	4,10			0,55	3000	57	44
CJBDT-10/10-4T	1420	2,90	1,70		0,55	3450	60	49
CJBDT-10/10-4M	1410	4,10			0,55	3450	60	49
CJBDT-12/12-6T-1	940	4,40	2,60		0,75	4800	57	69
CJBDT-12/12-6M-1	920	5,80			0,75	4800	57	69
CJBDT-12/12-6T-1.5	945	6,40	3,70		1,10	6200	58	71
CJBDT-12/12-6M-1.5	920	8,40			1,10	6200	58	71
CJBDT-15/15-6T	950	10,30	5,90		2,20	8250	62	110
CJBDT-18/18-6T	970		11,00	6,35	4,00	11800	64	175

1. The noise level values are pressures in dB(A) measured at a distance of 3 metres in a free field.



Erp. (Energy Related Products)

Information on Directive 2009/125/EC can be downloaded from the SODECA website or the QuickFan selector programme.

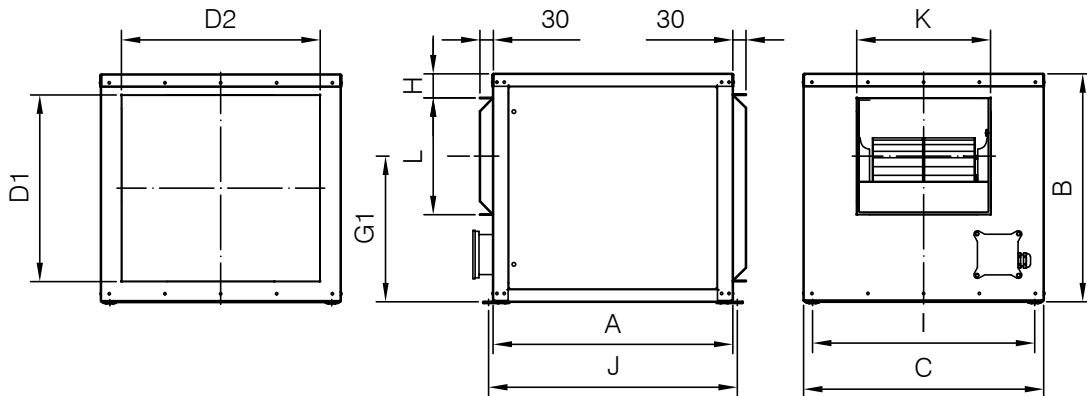
Acoustic characteristics

The values given are obtained under laboratory conditions according to ISO 3744.

Sound power spectrum Lw(A) in dB(A) per Hz frequency band
Values measured at inlet with maximum flow rate

	63	125	250	500	1000	2000	4000	8000		63	125	250	500	1000	2000	4000	8000
CJBDT-9/9-4	54	69	73	72	71	68	68	58	CJBDT-12/12-6-1.5	55	70	74	73	72	69	69	59
CJBDT-10/10-4	57	72	76	75	74	71	71	61	CJBDT-15/15-6	66	75	77	79	74	73	67	58
CJBDT-12/12-6-1	54	69	73	72	71	68	68	58	CJBDT-18/18-6	67	77	79	81	76	75	69	60

Dimensions mm



	A	B	C	D1	D2	G1	H	I	J	K	L
CJBDT-9/9	550	522	550	428	456	333,5	54,5	509	570	308	268
CJBDT-10/10	600	575	600	480	505	361,5	65,5	559	620	334	296
CJBDT-12/12	650	650	700	555	605	418	57,5	659	670	395	349
CJBDT-15/15	755	755	800	660	705	485	64	759	775	478	412
CJBDT-18/18	1000	900	1000	804	904	585	69,5	934	1041	550	491

Accessories



INT



IAT



CABLE BOX



VSD3/A-RFT
- VSD1/A-RFM



VSD1/M



CENTRAL CO



P-400



VIS

Characteristic curves

Q= Flow rate in m³/h, m³/s and cfm

Pe= Static pressure in mm H₂O, Pa and inwg

