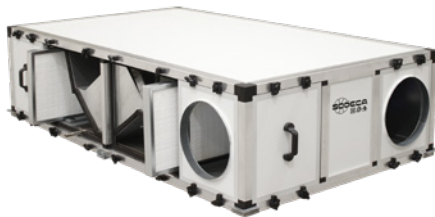


RECUP/EC BS



High efficiency heat recovery units with counterflow plate heat exchangers, automatic control and EC technology motors, for installation in false ceilings



Common characteristics:

- Plug Fan type EC fans regulated from a 0-10 V signal.
- Built-in maintenance section switch.
- Thermal efficiency between 85-90%.
- High quality reinforced aluminium frame structure.
- Panels with a 25 mm thick thermal and acoustic insulation; exterior made of prefinished sheet.
- XPS type panels with thermal bridge break.
- High efficiency filtration:
 - M6+F8
 - F7+F9
- Wide access for maintenance.
- Free cooling with motorised BY-PASS hatch.
- Condensate collection and drainage tray.

- STOP / START and speed control available through control panel or external contacts.
- Built-in temperature and humidity sensors.
- Filter status control by means of built-in pressure switches.
- Fault and fire alarm shut down management.
- Compatible with MODBUS RTU.

Finish:

- Aluminium frame and external prefinished sheet structure.
- Panels with a 25 mm thick thermal and acoustic insulation.
- Low profile for installation in false ceilings.
- Interchangeable connections for more versatility.

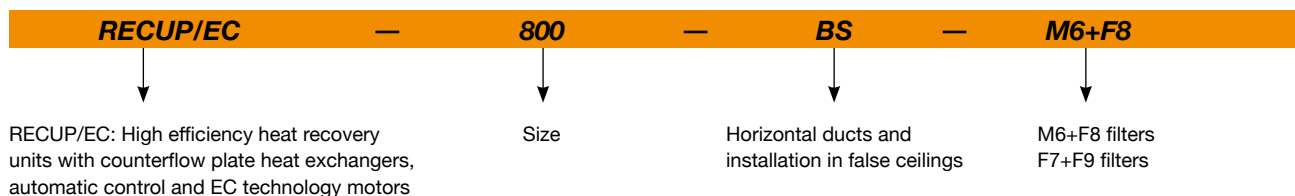
Built-in control panel:

- Free cooling control by means of a motorised BY-PASS.
- Fan speed control by manual selection or by optional external sensors (CO₂ or pressure).
- Built-in control system with remote control panel.

On request:

- External battery modules for air treatment.
- Special efficacy filters.
- Modules with UVc germicidal chamber.

Order code



Characteristics based on size

	RECUP/EC-800-BS	RECUP/EC-1200-BS	RECUP/EC-1600-BS	RECUP/EC-2100-BS	RECUP/EC-2700-BS
Supply filter (ODA)	M6+F8 / F7+F9	M6+F8 / F7+F9	M6+F8 / F7+F9	M6+F8 / F7+F9	M6+F8 / F7+F9
Extraction filter (ETA)	M6	M6	M6	M6	M6
Free cooling function by means of a motorised BY-PASS	YES	YES	YES	YES	YES
Panel thickness	25 mm	25 mm	25 mm	25 mm	25 mm
Condensate discharge	YES	YES	YES	YES	YES
Pressure switch to control built-in filter status	YES	YES	YES	YES	YES
Safety and maintenance switch	YES	YES	YES	YES	YES
Built-in control panel	YES	YES	YES	YES	YES

Technical characteristics

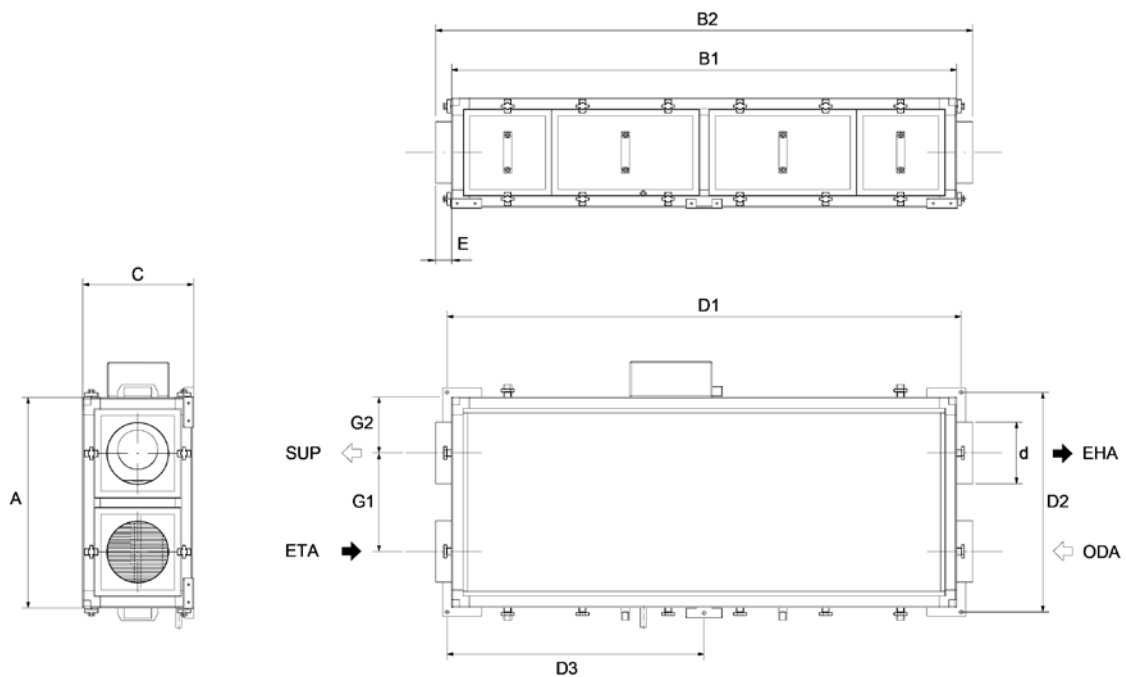
Model	Nominal flow rate (m ³ /h)	Recovery unit efficiency (%)	Available pressure (Pa)	Nominal power (kW)	Nominal current (A)	Voltage (V)	Irradiated sound level at 5 m dB(A)	Weight (kg)	According ErP
RECUP/EC-800-BS	800	86.5	70	0.39	2.91	1/230	45	78	2018
RECUP/EC-1200-BS	1200	86.8	70	0.32	1.16	1/230	34	105	2018
RECUP/EC-1600-BS	1600	86.2	100	0.53	2.11	1/230	40	178	2018
RECUP/EC-2100-BS	2100	88.0	100	0.76	3.14	1/230	43	216	2018
RECUP/EC-2700-BS	2700	86.9	100	1.23	5.17	1/230	50	216	2018



Erp. (Energy Related Products)

Information on Directive 2009/125/EC can be downloaded from the SODECA website or the QuickFan selector programme.

Dimensions mm



Model	A	B1	B2	C	D1	D2	D3	E	G1	G2	d
RECUP/EC-800-BS	684	1644	1694	357	1664	704	832	25	320	182	200
RECUP/EC-1200-BS	1124	1890	1940	480	1910	1144	955	25	695	214	315
RECUP/EC-1600-BS	1250	1970	2020	480	1990	1270	995	25	781	235	355
RECUP/EC-2100-BS	1250	2198	2248	620	2218	1270	1109	25	736	257	400
RECUP/EC-2700-BS	1250	2198	2248	620	2218	1270	1109	25	736	257	400

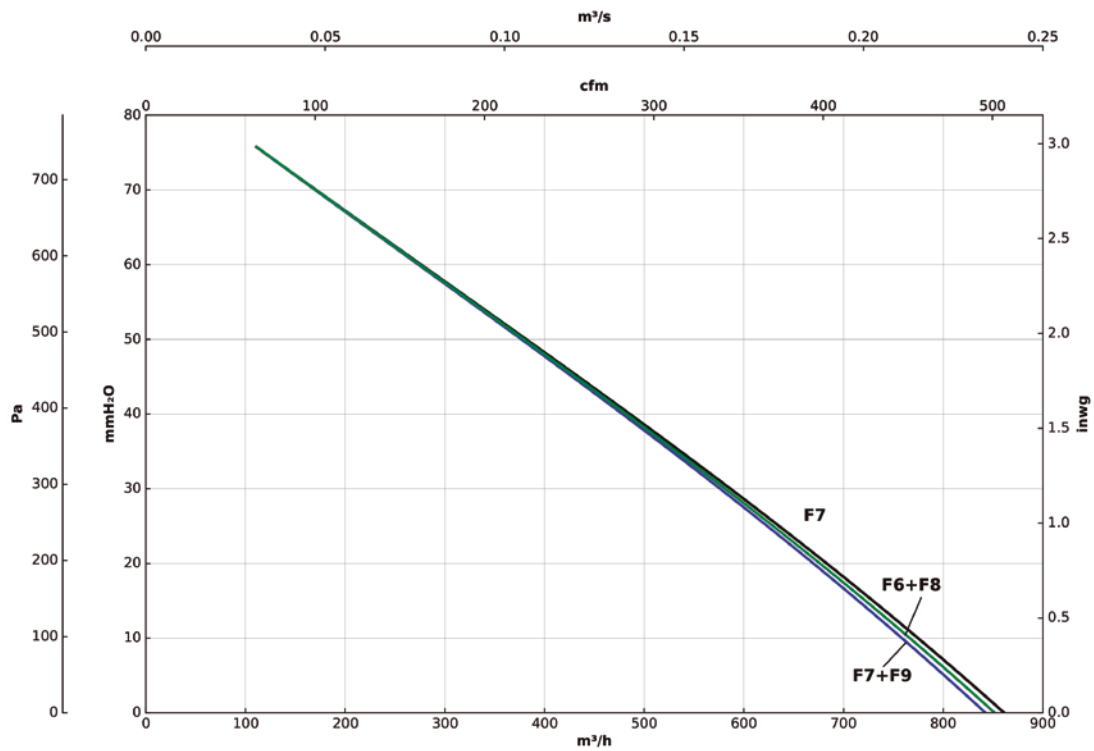
ODA: Fresh outdoor air / **SUP:** Air impulsion to the premise / **EHA:** Exit of exhaust air / **ETA:** Air extraction from premises.

Characteristic curves

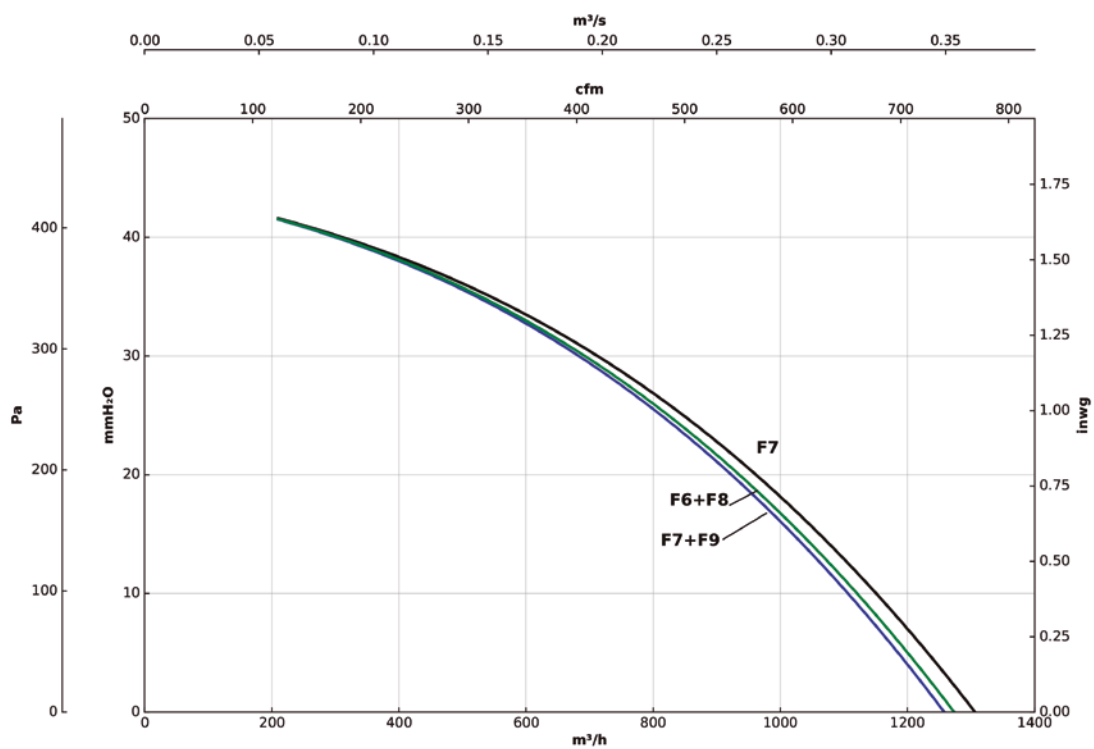
Flow rate in m³/h, m³/s and cfm.

Static pressure in mmH₂O, Pa and inwg.

RECUP/EC-800-BS



RECUP/EC-1200-BS

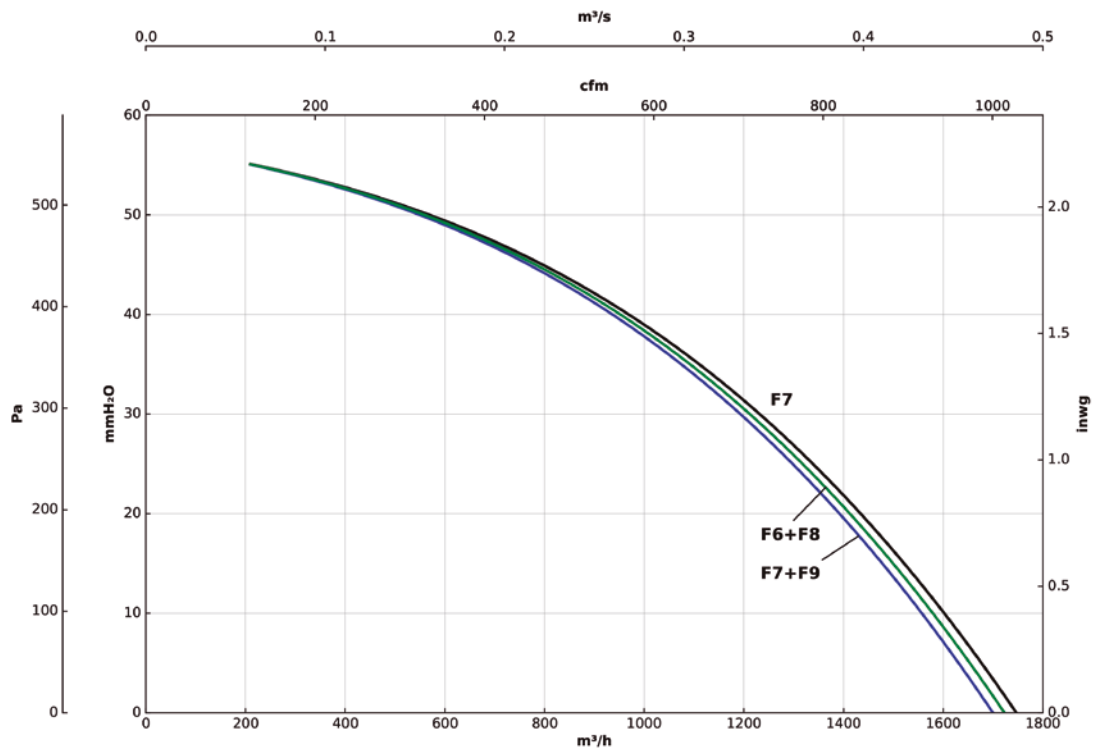


Characteristic curves

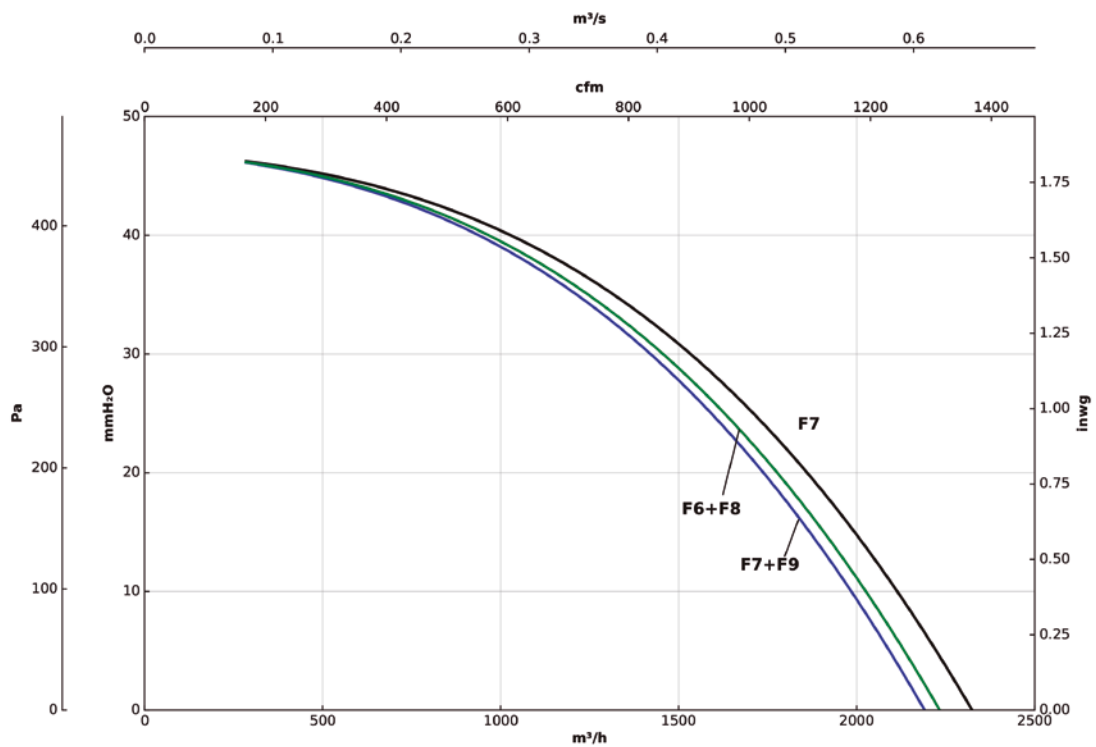
Flow rate in m³/h, m³/s and cfm.

Static pressure in mmH₂O, Pa and inwg.

RECUP/EC-1600-BS



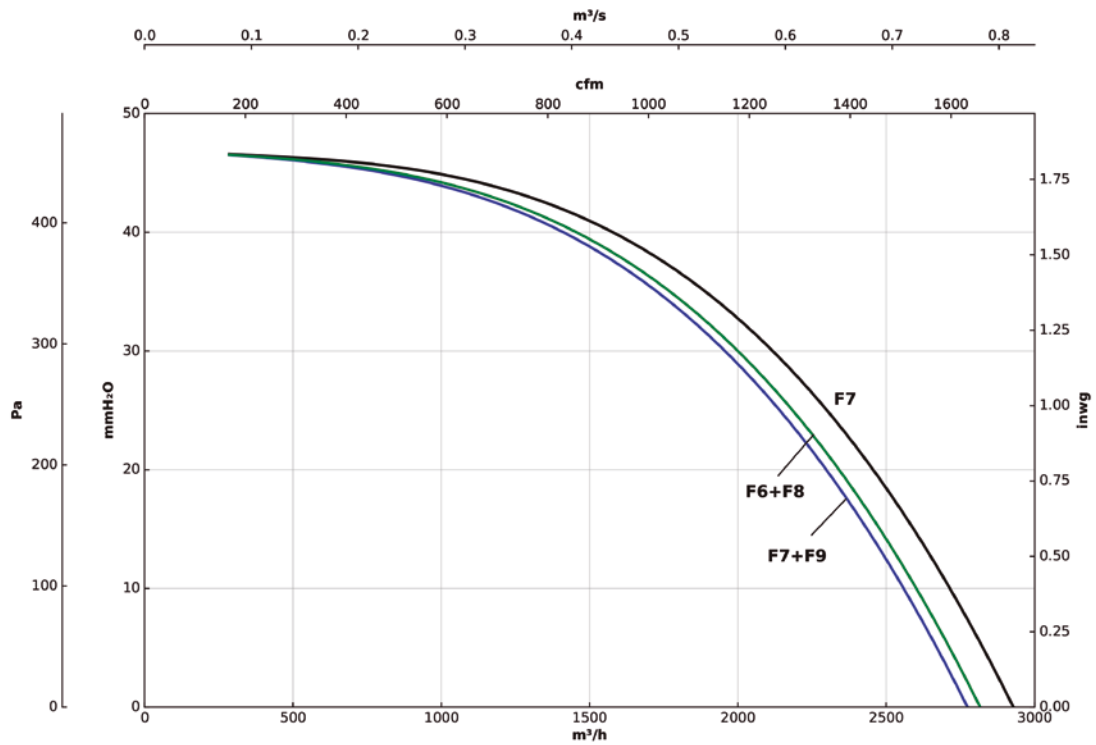
RECUP/EC-2100-BS



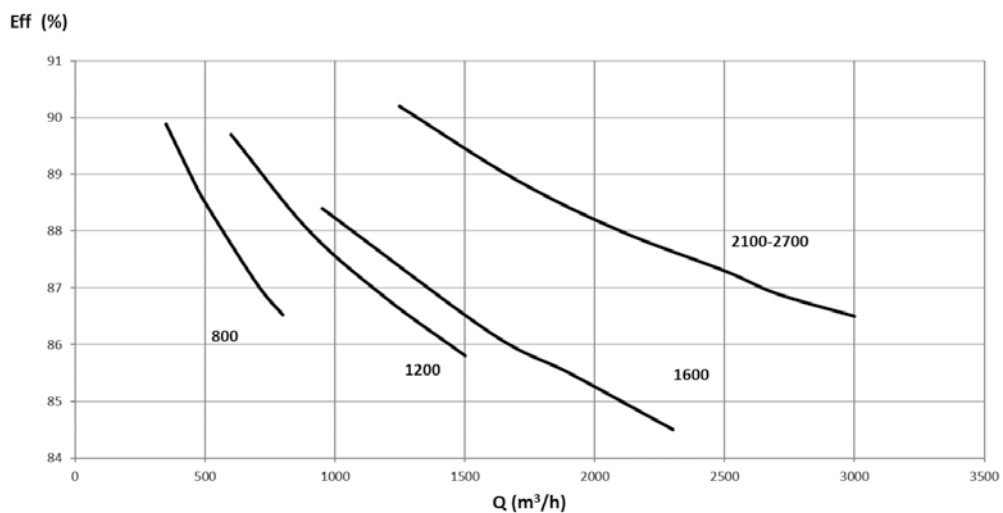
Characteristic curves

Flow rate in m³/h, m³/s and cfm. Static pressure in mmH₂O, Pa and inwg.

RECUP/EC-2700-BS



Efficiency curves



Accessories



FILTERS



TEJ



PRESSURE SWITCH



SI-CO₂ IND



GERMICIDAL CHAMBER